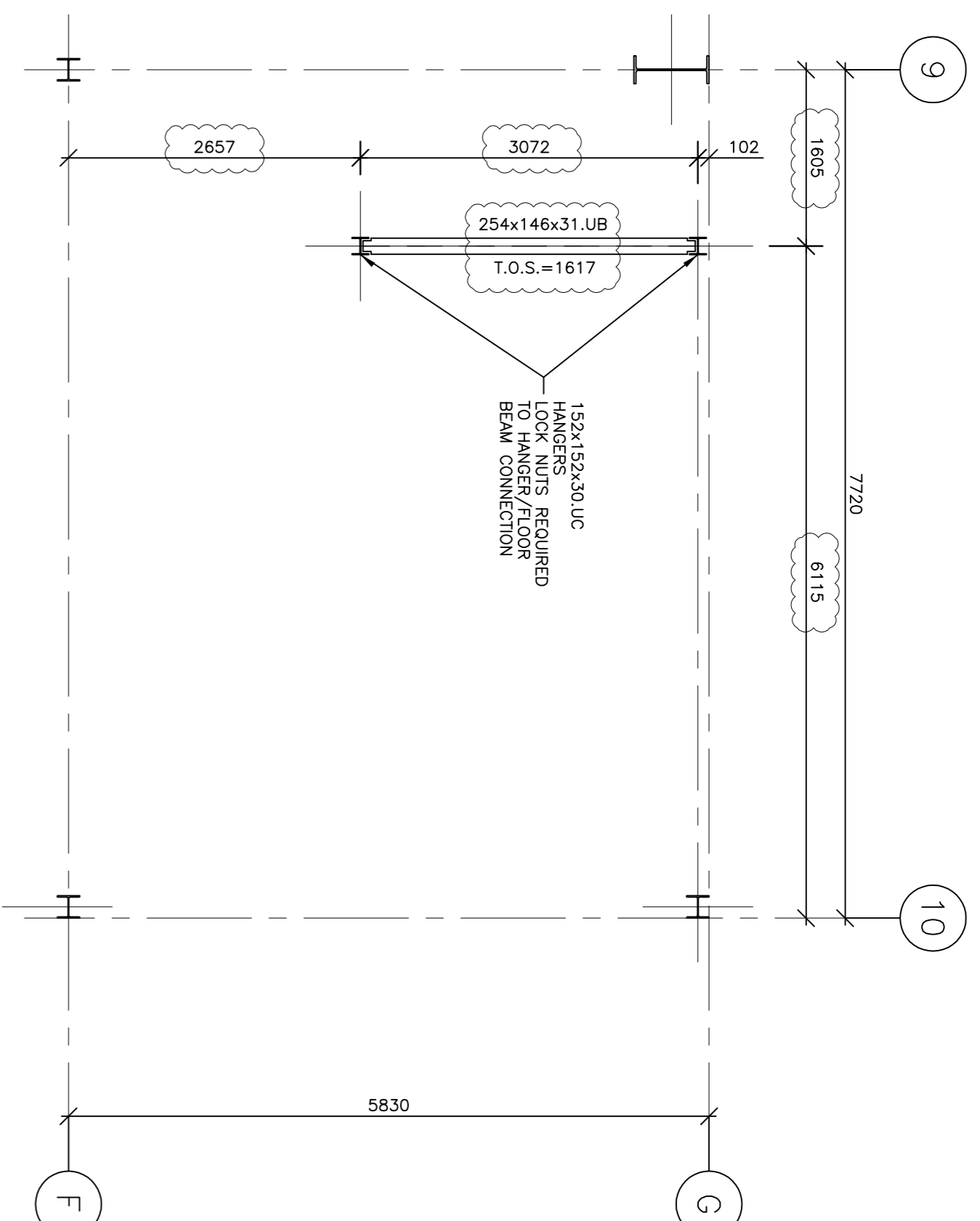


FIRST FLOOR LAYOUT PLAN

TOP OF STEEL BEAM LEVEL TO BE AT +3525
DENOTES COLUMNS TO BE FIXED TO UNDERSIDE OF RAFTERS WITH VERTICALLY SLOTTED CONNECTIONS



LANDING SUPPORT LAYOUT PLAN

STEEL GRADES

ALL HOT ROLLED STEELWORK IS GRADE S355JR UNLESS NOTED OTHERWISE.

ALL CHS SECTIONS ARE GRADE S355J2H (COLD FORMED) UNLESS NOTED OTHERWISE

NOTES

| REV | DESCRIPTION | DATE | CHKD |
|-----|---|----------|------|
| B | FLOOR/STAIR TRIMMING STEEL PERIONS COVERED | 11.05.07 | |
| A | FLOOR BEAMS REVISION TO SUIT 200 DEEP UNITS | 01.05.07 | |

DRAWING STATUS: **CONSTRUCTION ISSUE**



DRAWN : D.Holden SCALE : 1:50
DATE : April 2007 CHKD. IM

TITLE
UNIT 2
OFFICE LAYOUT PLAN

CONTRACT
ALPHA 2, PLOT 9
HAMS HALL

CONTRACT No. DRAWING No.
1607 GA 011

REV : B

THIS DRAWING IS COPYRIGHT. IT IS SENT TO YOU IN CONFERENCE. IT MUST NOT BE COPIED, USED OR DISCLOSED TO THIRD PARTIES WITHOUT OUR PERMISSION. IT REMAINS OUR PROPERTY AND MUST BE RETURNED ON REQUEST.